

INSTALLATION INSTRUCTIONS ATLA PENDANT WITH P1FBX HANGING SYSTEM

These instructions cover the ATLA luminaire with the following options:

SERIES	HANGING SYSTEM	SIZE	LIGHT SOURCE	CONTROL	WIRE DIAGRAM
AA2 AA3	P1FBX: PENDANT WITH FLAT CANOPY, SINGLE CENTER AIRCRAFT CABLE, SINGLE WHITE (P1FCFW) OR BLACK (P1FCB) POWER CORD; MOUNTS TO OCL RECESSED J-BOX (PROVIDED BY OCL)	12" 18"	STATIC WHITE	DM1: 0-10V DIM 1%	WIRE DIAGRAM ON PAGE 12

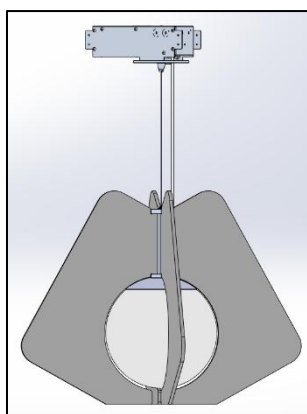


FIG. 1 – AA2-P1FKX-12-XX-
 GW-XXX-XXX-LEDX_XXK-
 UNV-XXX-DM1-XXX

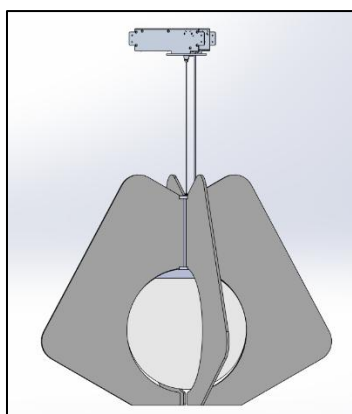


FIG. 2 – AA2-P1FKX-18-XX-
 GW-XXX-XXX-LEDX_XXK-UNV-
 XXX-DM1-XXX

GENERAL NOTES:

- PLEASE COMPLETELY READ THE INSTALLATION INSTRUCTIONS BEFORE STARTING INSTALLATION.
- TURN OFF POWER TO CIRCUIT FIXTURE WHILE IT IS BEING INSTALLED.
- INSTALL IN ACCORDANCE WITH ALL LOCAL, STATE AND NATIONAL CODES CONSULT WITH A QUALIFIED ELECTRICIAN FOR PROPER INSTALLATION.
 -CE PRODUIT DOIT ÊTRE INSTALLÉ SELON LE CODE D'INSTALLATION PERTINENT, PAR UNE PERSONNE QUI CONNAÎT. CONSULTER UNE ÉLECTRICIEN QUALIFIÉ POUR VOUS ASSURER QUE LES CONDUCTEURS DE LA DÉRIVATION SONT ADÉQUATS.
- CAREFULLY UNPACK ALL CONTENTS; SOME COMPONENTS MAY HAVE BEEN SHIPPED IN SEPARATE BOXES MOST FIXTURES ARE SHIPPED PARTIALLY ASSEMBLED. SOME UNASSEMBLY MAY BE REQUIRED FOR INSTALLATION.
- FIXTURE POWER CORD WIRES ARE LOW- VOLTAGE. DO NOT CONNECT TO LINE VOLTAGE OR DAMAGE TO THE FIXTURE WILL OCCUR AND WARRANTY WILL BE VOIDED.
- DO NOT LET THE ATLA LUMINAIRE HANG FREE UNTIL THE CABLE IS PROPERLY SECURED.
- DUE TO A CHANGE IN NEC SECTION 410.69 EFFECTIVE IN 2022, THE COLOR PINK WILL BE USED IN PLACE OF GRAY FOR 0-10V CONTROL. NOTE THAT EXISTING SYSTEMS AND FIXTURES MANUFACTURED PRIOR TO 2022 MAY STILL USE GRAY WIRE AS AN UNGROUNDED CONDUCTOR FOR 0-10V CONTROL. CARE SHOULD BE TAKEN WHEN WORKING ON EXISTING SYSTEMS.

OCL Architectural Lighting

Phone: 314.863.1895
 Fax: 314.863.3278
www.ocl.com

Table of Contents

GENERAL INFORMATION:	3
MOUNTING:	4
ATLA 12" and 18" MOUNTING:	4
ATLA MOUNTING [HARD CEILING]:	4
ATLA MOUNTING [GRID CEILING]:	6
ATLA MOUNTING [CANOPY]:	7
WIRE DIAGRAM:	12

AA1-P1FBX-LED-INSTALLATION-INSTRUCTIONS

GENERAL INFORMATION:

You will receive the following with each ATLA series pendant fixture:

1. REFLECTOR ASSEMBLY with CORD attached. (shown in FIG. 3)
2. ACRYLIC GLOBE. (shown in FIG. 4)
3. ACOUSTIC HOLDER ASSEMBLY. (shown in FIG. 5)
4. ACOUSTIC FIN. (shown in FIG. 6)
5. INSTALLATION INSTRUCTIONS (shown in FIG. 7) - Please completely read the install instructions before starting installation.
6. RED BAG (shown in FIG. 7) contains below following items:
 - a. CANOPY SUBASSEMBLY (as shown in FIG. 8)
 - b. MOUNTING KIT CONTENTS
 - i. STRAIN RELIEF (as shown in FIG. 9)
 - ii. AIRCRAFT CABLE

WARNING: Examine all components for any damage before beginning installation.

WARNING: This fixture should be installed by a licensed electrician only.

WARNING: Be careful not to scratch or damage any finished parts.

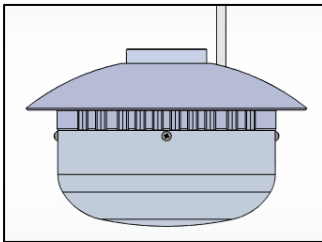


FIG.3 - REFLECTOR
ASSEMBLY (PRE-ASSEMBLED)

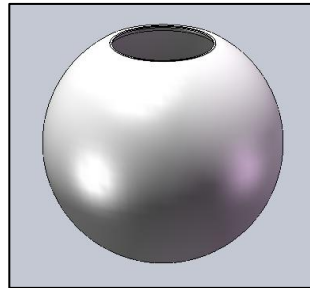


FIG.4 ACRYLIC GLOBE

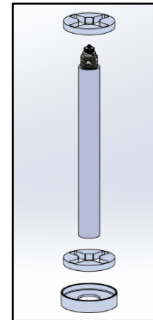


FIG.5 ACOUSTIC HOLDER
ASSEMBLY

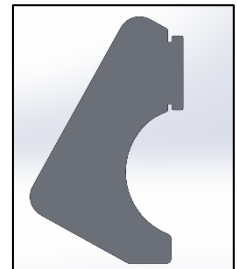


FIG.6 ACOUSTIC FIN

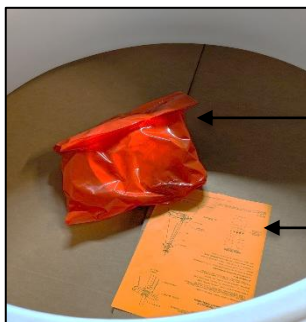


FIG.7 RED BAG AND
INSTALLATION INSTRUCTIONS

RED BAG

INSTALLATION
INSTRUCTIONS

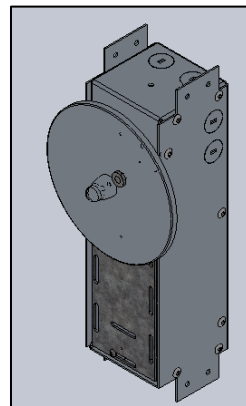


FIG. 8 - CANOPY SUBASSEMBLY

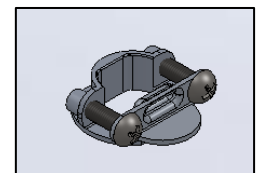


FIG. 9 - STRAIN RELIEF

OCL Architectural Lighting

Phone: 314.863.1895

Fax: 314.863.3278

www.ocl.com

AA1-P1FBX-LED-INSTALLATION-INSTRUCTIONS

MOUNTING:

ATLA 12" and 18" MOUNTING:

1. Unscrew SRC- FINIAL and remove the CANOPY PLATE out of J-BOX as shown in FIG. 10.
2. Remove the SCREWS securing MOUNTING BRACKET ASSEMBLY, and slide MOUNTING BRACKET ASSEMBLY out of J-BOX along with STRAIN RELIEF provided in it as shown in FIG. 11.

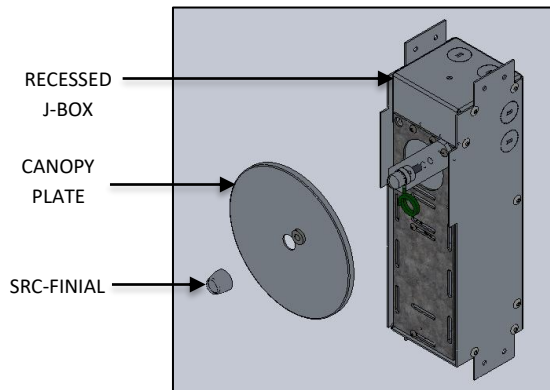


FIG. 10 – FINIAL AND CANOPY

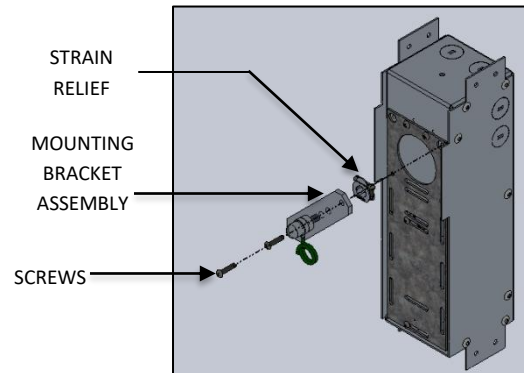


FIG.11 – MOUNTING BRACKET DISASSEMBLY

NOTE:

For **ATLA MOUNTING [HARD CEILING]** see steps from 3 to 11,
For **ATLA MOUNTING [GRID CEILING]** see steps from 12 to 19.

ATLA MOUNTING [HARD CEILING]:

3. Remove the SCREWS securing DRIVER PLATE, and slide DRIVER PLATE out of J-BOX as shown in FIG. 12.
4. Attach RECESSED JUNCTION BOX to WALL STUD or CEILING JOIST at desired height and location before drywall is installed as shown below in FIG. 13. Use appropriate anchor screws to secure to stud.
(**Make sure the front of J-BOX is flush with the surface of the STUD and the large end of the BOX should face downward when mounted in the wall.**)
5. Remove the appropriate knock out for desired wire entrance location as shown in FIG. 14.

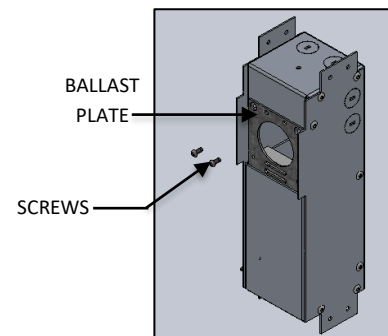


FIG. 12 - DRIVER PLATE DISASSEMBLE

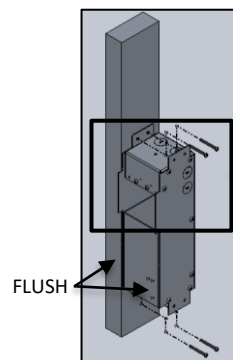


FIG. 13 - J-BOX ASSEMBLY
TO WALL

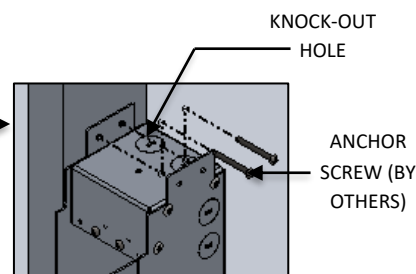


FIG. 14 - DETAIL SHOWING
KNOCK-OUT HOLE AND SCREWS

OCL Architectural Lighting

Phone: 314.863.1895

Fax: 314.863.3278

www.oclighting.com

AA1-P1FBX-LED-INSTALLATION-INSTRUCTIONS

6. Attach appropriate 1/2" CONDUIT FITTING to knockouts and run building supply connections into the box. make sure to pull the wires out through the square opening as shown below in FIG. 15 & 16.

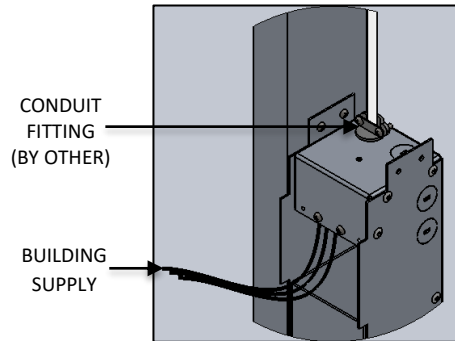


FIG. 15 - DETAIL SHOWING
BUILDING SUPPLY AND
CONDUIT FITTING

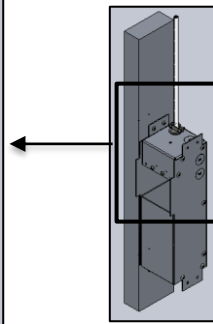


FIG. 16 - CONDUIT
FITTING TO J-BOX
ASSEMBLY

7. Cut a SQUARE HOLE no larger than 3.375" x 3.625.
8. Attach the desired ceiling covering and finish accordingly as shown in FIG. 17.

Min Ceiling Thickness is .5"
Max Ceiling Thickness is 1.25"

9. Slide DRIVER PLATE into the box with the DRIVER facing rearward as shown in FIG. 18. As you slide the plate in, make sure you pull the BUILDING SUPPLY connections through the large hole in the DRIVER PLATE and other wires will already be through center hole.
10. Make BUILDING SUPPLY wire connections and tuck them into the top section of the box leaving the DRIVER WIRES out as shown in FIG. 19. Make all wire connections in the inside the junction box (by others) in accordance with the NATIONAL ELECTRICAL CODE and all applicable LOCAL AND STATE CODES.

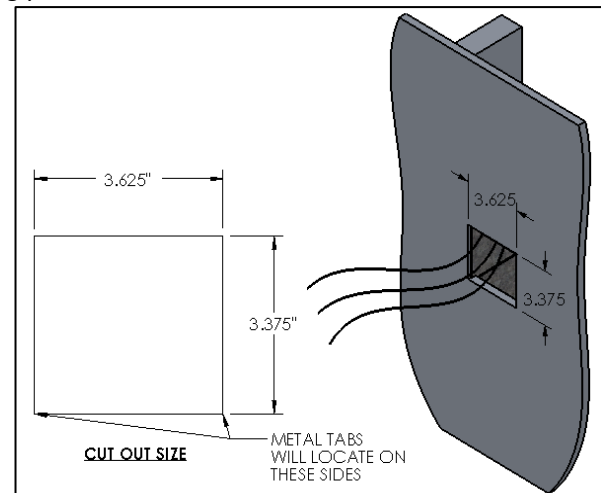


FIG. 17- J-BOX ASSEMBLY AND WALL CUT OUT

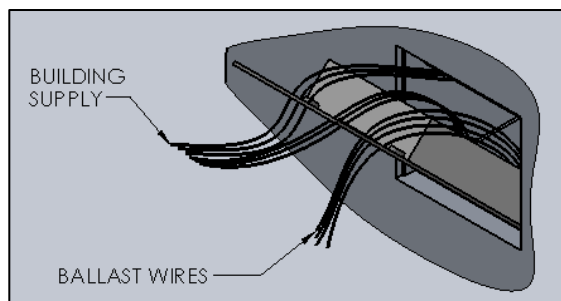


FIG. 19 - DETAIL SHOWING BUILDING SUPPLY AND
DRIVER WIRE CONNECTION

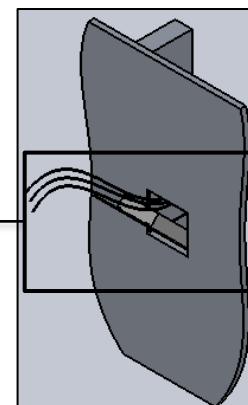


FIG. 18 - DRIVER PLATE ASSEMBLY

OCL Architectural Lighting

Phone: 314.863.1895

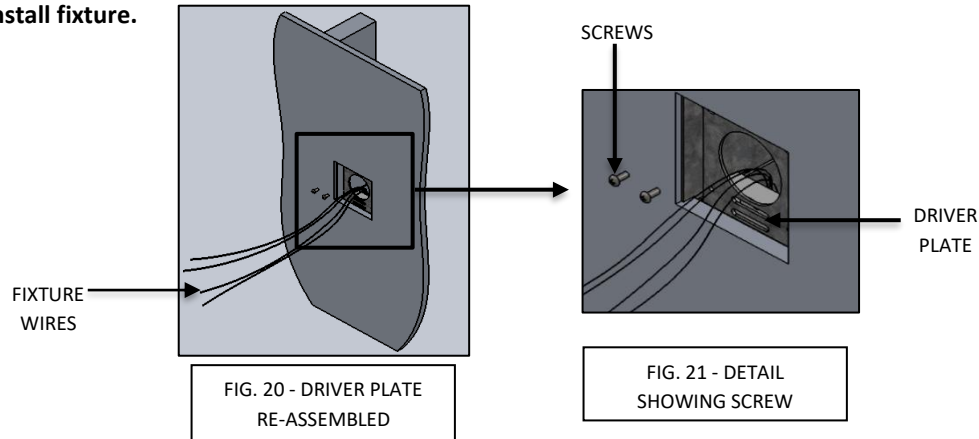
Fax: 314.863.3278

www.oclighting.com

AA1-P1FBX-LED-INSTALLATION-INSTRUCTIONS

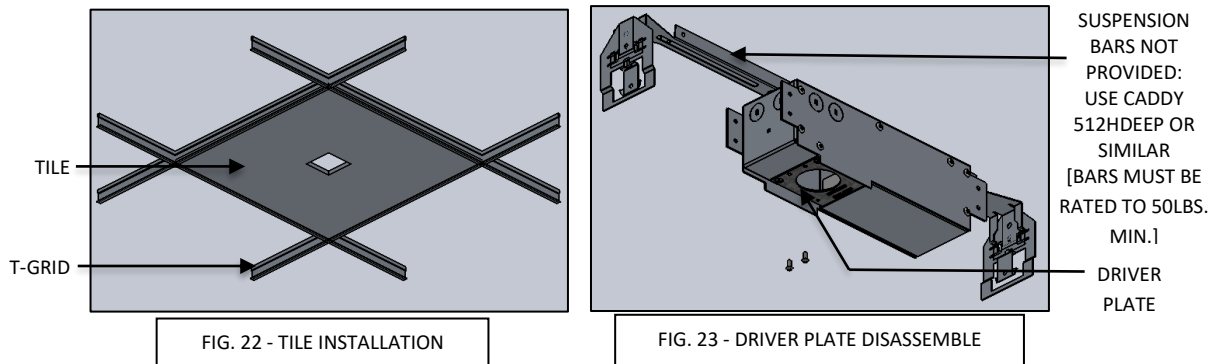
11. Reattach DRIVER PLATE with the screws provided as shown in FIG. 20 and 21.

CAUTION: Make sure **FIXTURE WIRES** from **DRIVER** as shown in FIG.20 are capped while waiting to install fixture.

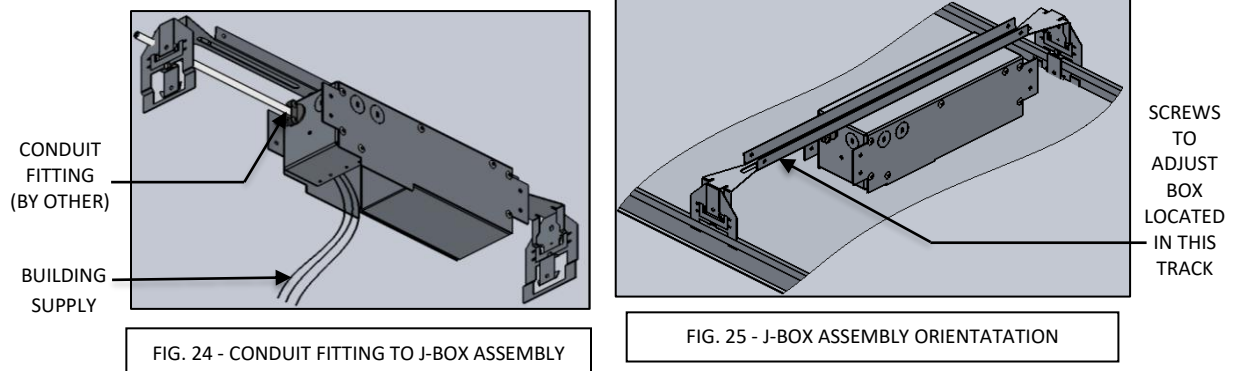


ATLA MOUNTING [GRID CEILING]:

12. Cut a 3.375" high and 3.625" Wide Hole into the CEILING TILE and insert the TILE into the desired location as shown below in FIG. 22.
13. Remove the DRIVER PLATE by removing the Two Screws and slide out as shown below in FIG. 23.



14. Remove the desired knock out and attach appropriate 1/2" CONDUIT FITTING and pull the BUILDING SUPPLY wires through the opening as shown below in FIG. 24.
15. From an adjacent opening attach, the J-BOX to the GRID with the SUSPENSION BARS [BY OTHER] attached on the top. (Position of the J-BOX can be moved by loosening the top 2 SCREWS) as shown below in FIG. 25.
16. Center the flanges into the Square Hole, the surface of the J-BOX should almost rest onto the CEILING TILE.



OCL Architectural Lighting

Phone: 314.863.1895

Fax: 314.863.3278

www.oclighting.com

AA1-P1FBX-LED-INSTALLATION-INSTRUCTIONS

17. Slide DRIVER PLATE into the box with the DRIVER facing up. As you slide the plate into position, make sure you pull the BUILDING SUPPLY connections through the large hole in the DRIVER PLATE as shown below in FIG. 26 and other wires will already be through the center hole.

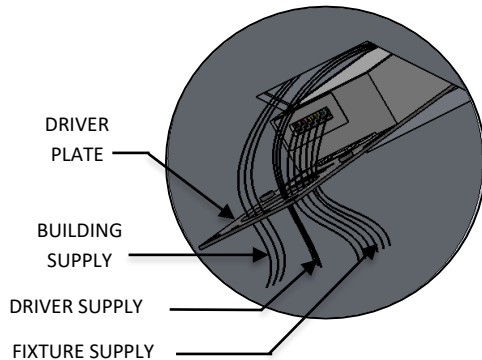


FIG. 26 - DETAIL SHOWING BUILDING SUPPLY AND DRIVER WIRE

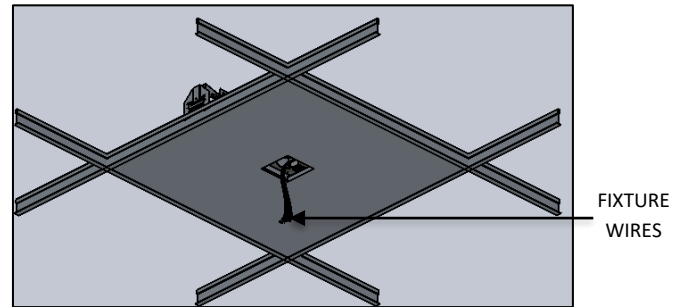


FIG. 27 - ASSEMBLED VIEW SHOWING RECESSED J-BOX TO THE CEILING

18. Secure the DRIVER PLATE with the screws provided.
19. Make BUILDING SUPPLY WIRE connections and tuck them into the small section of the J-BOX. Make all wire connections in the inside the junction box (by others) in accordance with the NATIONAL ELECTRICAL CODE and all applicable LOCAL AND STATE CODES.

CAUTION: Make sure FIXTURE WIRES from DRIVER are capped while waiting to install fixture as shown in FIG. 27.

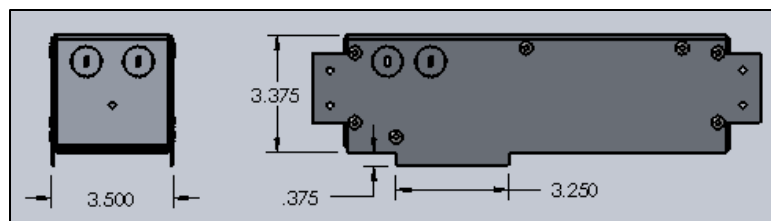


FIG. 28 - INSTALLED JUNCTION BOX

ATLA MOUNTING [CANOPY]:

20. Dis-assemble the SLIP RING COUPLER (1) as shown below in FIG.29 into components SRC-BASE and SRC-HOLDER.
21. Screw the THREAD ROD into the top of the SRC-BASE until fully seated. Then assemble the THREADED ROD/ SRC-BASE into the center hole of the MOUNTING BRACKET until SRC-BASE is fully seated against MOUNTING BRACKET as shown below in FIG. 30.

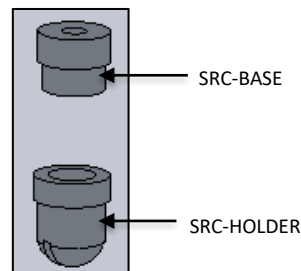


FIG. 29 - SLIP RING COUPLER (1) CONTENTS

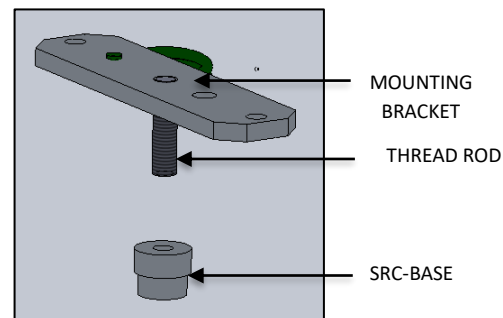


FIG. 30 - THREAD ROD INSTALLATION

OCL Architectural Lighting

Phone: 314.863.1895

Fax: 314.863.3278

www.ocl.com

AA1-P1FBX-LED-INSTALLATION-INSTRUCTIONS

22. Feed the AIRCRAFT CABLE through the SRC-HOLDER. Then assemble the SRC-HOLDER with AIRCRAFT CABLE to the SRC-BASE on the MOUNTING BRACKET ASSEMBLY. Secure the MOUNTING BRACKET ASSEMBLY to the JUNCTION BOX with two screws as shown below in FIG. 31.
23. Feed the remaining AIRCRAFT CABLE from the MOUNTING BRACKET ASSEMBLY through the center hole of the CANOPY and SRC-FINIAL. Loosely secure CANOPY to the ceiling by threading the SRC-FINIAL to the MOUNTING BRACKET ASSEMBLY as shown below in FIG. 32.

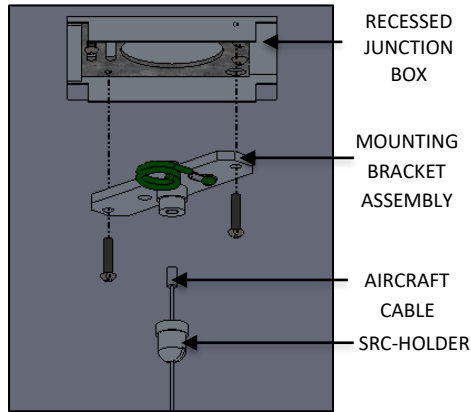


FIG. 31 – MOUNTING BRACKET

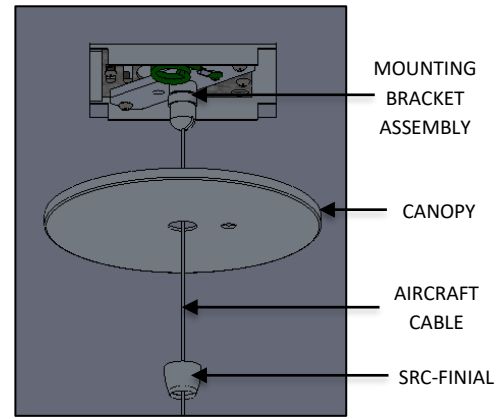


FIG. 32 – CANOPY INSTALLATION

24. Unscrew the THREADED COLLAR from THREADED NIPPLE and remove it from the REFLECTOR ASSEMBLY as shown below in FIG. 33.
25. Center TOP COVER, UNTHREADED COLLAR, and ACOUSTIC HOLDER on top of REFLECTOR SUBASSEMBLY as shown in FIG. 34. Ensure the deeper recess on UNTHREADED COLLAR is facing up and will hold the ACOUSTIC HOLDER.
26. Screw the STEM onto the THREADED NIPPLE of the REFLECTOR ASSEMBLY. Be careful not to scratch the finish with the ACOUSTIC HOLDERS.

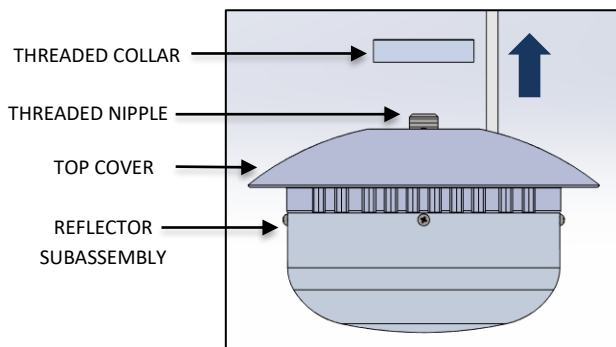


FIG. 33 THREADED COLLAR DISSASSEMBLY

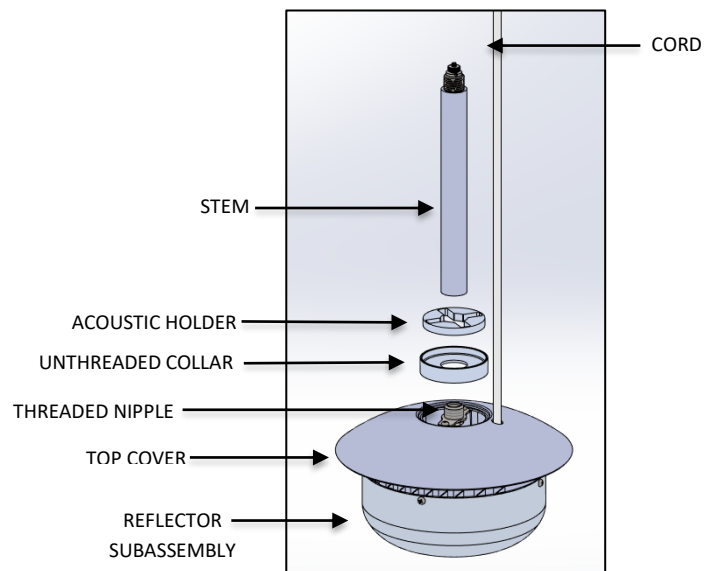


FIG. 34 ACOUSTIC PANEL HOLDER ASSEMBLY

OCL Architectural Lighting

Phone: 314.863.1895

Fax: 314.863.3278

www.oclighting.com

AA1-P1FBX-LED-INSTALLATION-INSTRUCTIONS

27. Feed AIRCRAFT CABLE through THREADED COLLAR and ACOUSTIC HOLDER then into the body of the GRIPLOCK and adjust fixture drop to desired height as shown in FIG. 35. Ensure THREADED COLLAR recess is facing down.
- Each AIRCRAFT CABLE must pass at least 1.75" beyond the body of the GRIPLOCK. When cutting off excess cable always leave at least 1" of cable showing.
 - Cables may be cut using purpose-built cutters such as Felco C7. Cable will not fray unless passed repeatedly through the Gripper mechanism or otherwise abused.
 - To prevent fraying of freshly cut ends, re-solder or apply a drop of super-glue.

WARNING:



Do not let the ATLA LUMINAIRE hang free until AIRCRAFT CABLE is secured.

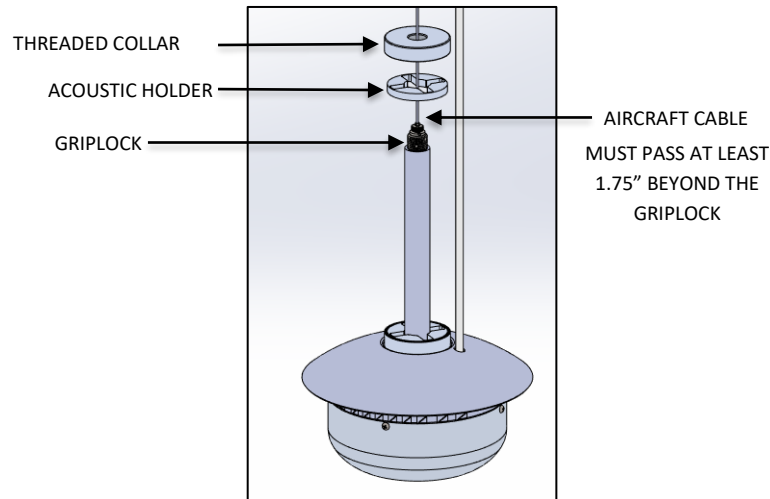


FIG.35 ACOUSTIC PANEL HOLDER ASSEMBLY

28. Lift TOP COVER from the REFLECTOR ASSEMBLY as shown below in FIG. 36. Be careful not to scratch the finish.
29. Tilt and Slide the REFLECTOR ASSEMBLY through the ACRYLIC GLOBE as shown in FIG. 37.

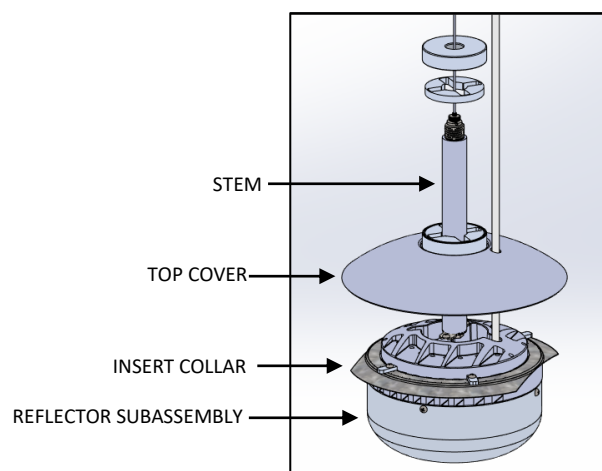


FIG. 36 – REFLECTOR DISSASSEMBLY

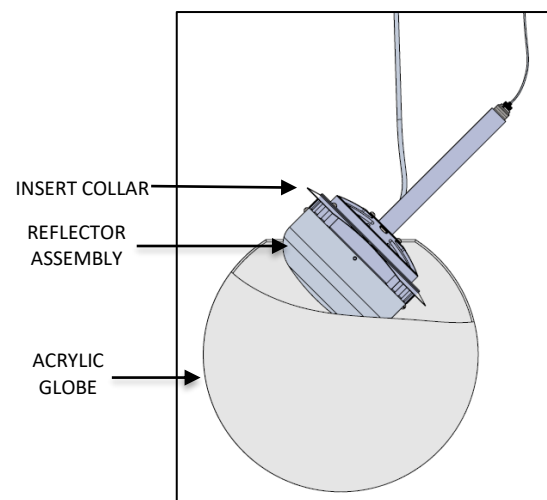


FIG. 37 – ACRYLIC GLOBE INSTALLATION

OCL Architectural Lighting

Phone: 314.863.1895

Fax: 314.863.3278

www.ocl.com

AA1-P1FBX-LED-INSTALLATION-INSTRUCTIONS

30. Make sure that ACRYLIC SHADE is properly seated onto the INSERT COLLAR and the CORD HOLE in TOP COVER lines up with the CORD SLOT in the REFLECTOR SUBASSEMBLY as shown in FIG. 38.
31. Carefully slide the TOP COVER, UNTHREADED COLLAR, and the bottom ACOUSTIC HOLDER back down as shown below in FIG. 39. Be careful not to damage fixture finish.

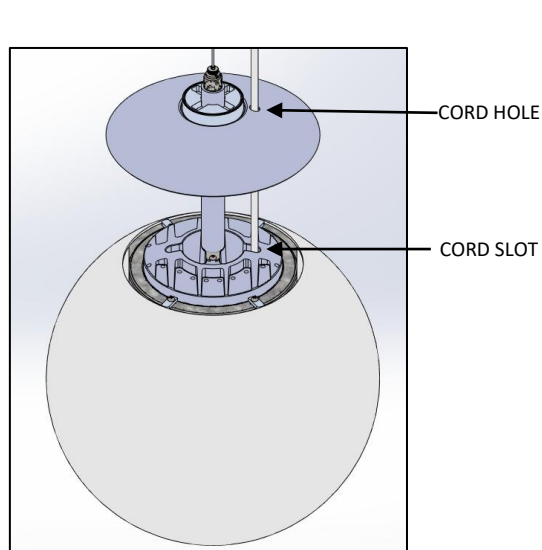


FIG. 38 – FITTER AND TOP COVER INSTALLATION

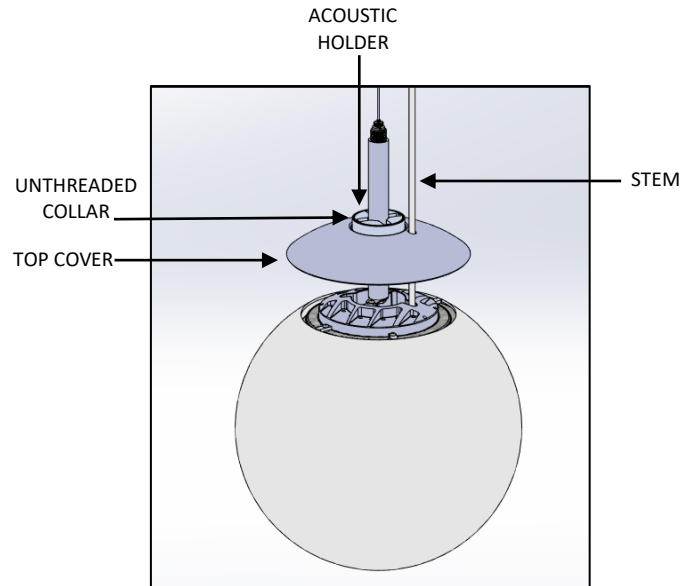


FIG. 39 – ACOUSTIC HOLDER INSTALLATION

32. Raise the upper ACOUSTIC HOLDER and THREADED COLLAR and insert ACOUSTIC FINS into lower ACOUSTIC HOLDER as shown in FIG. 40.
33. With all ACOUSTIC FINS slotted into the lower ACOUSTIC HOLDER, insert the ACOUSTIC FIN tabs into the upper ACOUSTIC HOLDER as shown in FIG. 41. Ensure all fins are properly slotted into place and then screw on THREADED COLLAR onto STEM.

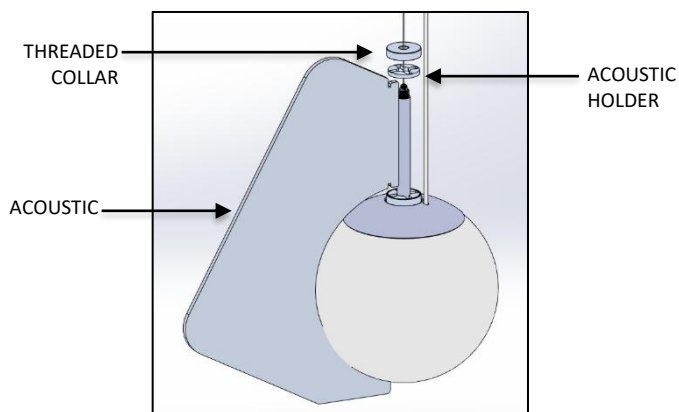


FIG. 40 – ACOUSTIC FIN INSTALLATION

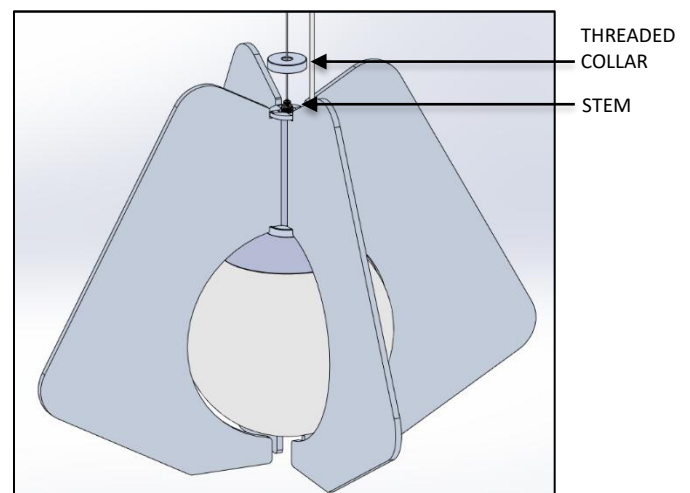


FIG. 41 – ACOUSTIC FIN INSTALLATION

OCL Architectural Lighting

Phone: 314.863.1895

Fax: 314.863.3278

www.oclighting.com

AA1-P1FBX-LED-INSTALLATION-INSTRUCTIONS

34. Once the ATLA FIXTURE BODY is secured to the AIRCRAFT CABLE at the GRIPLOCK, and the GLOBE is secured by the TOP COVER and FITTER, unthread the SRC-FINIAL from the MOUNTING BRACKET ASSEMBLY and lower the CANOPY as shown below in FIG 42. Be careful not to damage finished surfaces.
35. Feed POWER CORD through GROMMET and then pass it through the 2ND hole provided in the CANOPY as shown below in FIG. 43.

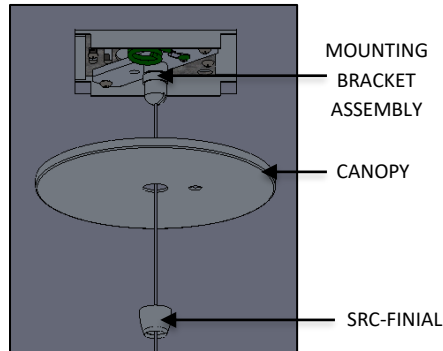


FIG. 42 – CANOPY DISASSEMBLY

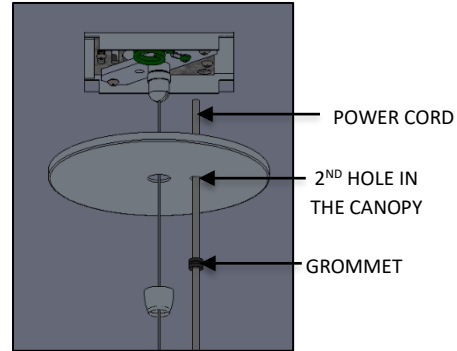


FIG. 43 – CORD INSTALLATION

36. Feed the CORD through the corresponding hole in the MOUNTING BRACKET ASSEMBLY. Adjust CORD to desired length and mark the CORD. Make sure to leave minimum of 8.00" past the top of the STRAIN RELIEF for making wire connections to driver as shown below in FIG 44.

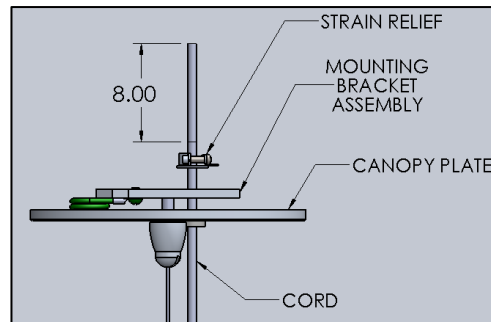


FIG. 44 – CORD INSTALLATION DETAIL

37. Install STRAIN RELIEF, ensuring flat side of STRAIN RELIEF rests on MOUNTING BRACKET and tighten screws all the way as shown below in FIG. 45 & 46.

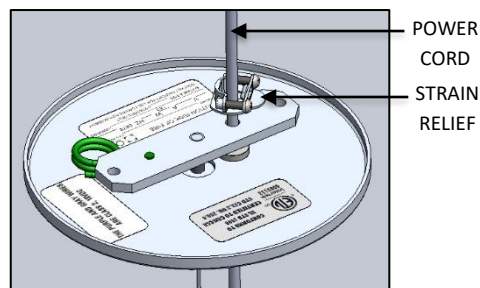


FIG. 45 – STRAIN RELIEF INSTALLATION

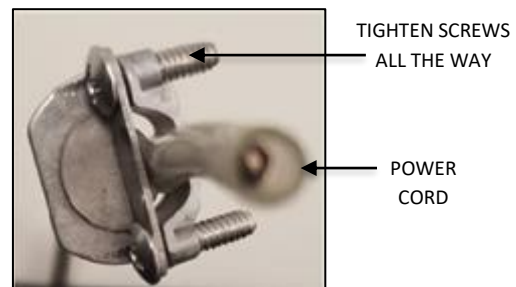


FIG. 46 – STRAIN RELIEF WITH CORD INSERTED

OCL Architectural Lighting

Phone: 314.863.1895

Fax: 314.863.3278

www.oclighting.com

AA1-P1FBX-LED-INSTALLATION-INSTRUCTIONS

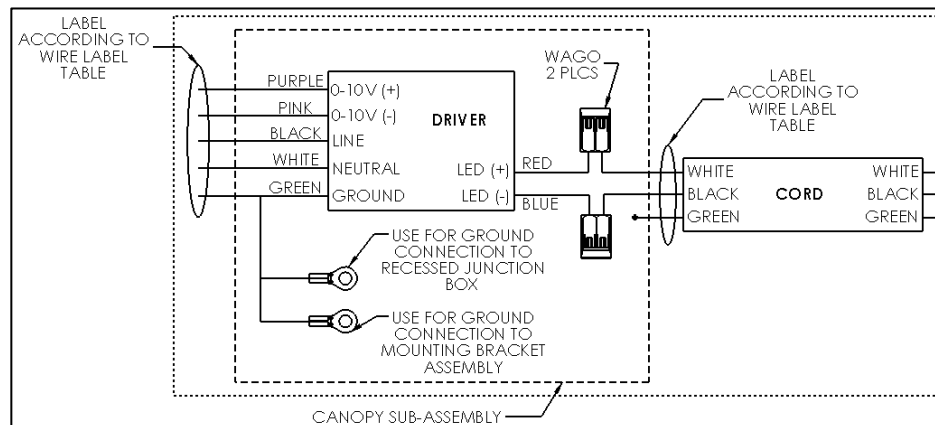
38. Make all wire connections inside the junction box (by others) in accordance with the NATIONAL ELECTRICAL CODE and all applicable LOCAL AND STATE CODES. See WIRE DIAGRAM TABLE and WIRE DIAGRAM below as shown in FIG. 47 & 48.

SERIES	HANGING SYSTEM	SIZE	LIGHT SOURCE	CONTROL	WIRE DIAGRAM
AA1 (ATLA)	P1FBX: PENDANT WITH SURFACE MOUNT CANOPY, SINGLE WHITE (P1FBW) OR BLACK (P1FBB) POWER CORD; MOUNTS TO 4X4 OCTAGON J-BOX (BY OTHERS)	12" 14" 18" 22"	STATIC WHITE	DM1: 0-10V DIM 1%	WIRE DIAGRAM ON PAGE 12

WIRE DIAGRAM:

WIRE LABEL TABLE		
CONTROL	WIRE COLOR	LABEL
ALL	WHITE(CORD)	LED(+)
ALL	BLACK(CORD)	LED(-)
ALL	BLACK(DRIVER)	LINE VOLTAGE
ALL	WHITE(DRIVER)	NEUTRAL
ALL	GREEN(DRIVER)	GROUND
ALL	RED(DRIVER)	LED(+)
ALL	BLUE(DRIVER)	LED(-)
DM1	PURPLE	0-10V (+)
DM1	PINK	0-10V (-)

FIG. 47 – WIRE LABEL TABLE



SEE GENERAL NOTE 7 ON PAGE 1

FIG. 48 – WIRE DIAGRAM

OCL Architectural Lighting

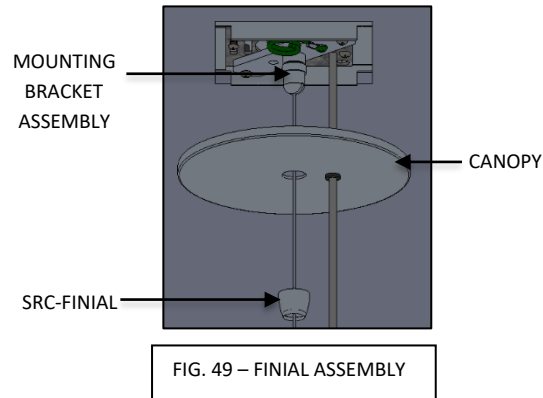
Phone: 314.863.1895

Fax: 314.863.3278

www.ocllighting.com

AA1-P1FBX-LED-INSTALLATION-INSTRUCTIONS

39. Raise CANOPY and secure to ceiling by threading the SRC-FINIAL to the MOUNTING BRACKET ASSEMBLY as shown below in FIG. 49.



40. Restore power to circuit the ATLA series pendant is connected to.
- Test ensure luminaire turns on after power is restored.
 - Contact OCL for any luminaire troubleshooting if a problem occurs.

